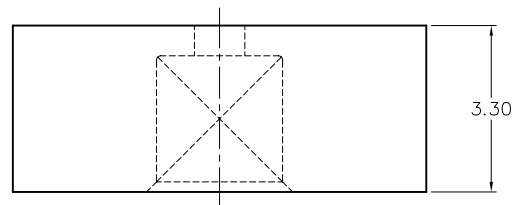
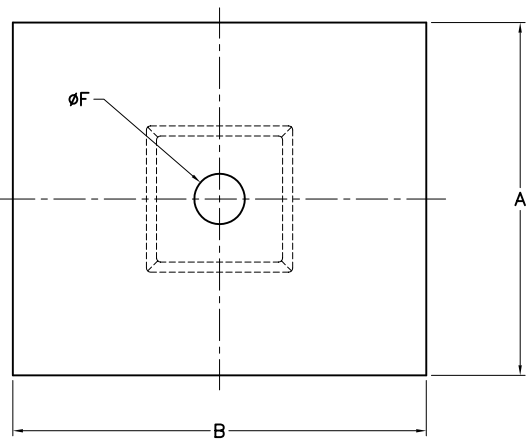


1 2 3 4 5 6

A



B



C

12.71 (501) ~ 63.00 (1600)	+0.03 -0.25
5.10 (201) ~ 12.70 (500)	+0.03 -0.20
1.78 (070) ~ 5.09 (200)	+0.03 -0.10
0 ~ 1.77 (069)	+0.03 -0.05
DIMENSION A & B (MILS)	TOLERANCE (MM)

13-034G-41	10.00 (394)	16.00 (630)	2.0	12D3
13-034G-40	9.30 (366)	15.20 (598)	2.0	12D3
13-034G-39	10.70 (421)	16.20 (638)	2.0	12D3
13-034G-38	16.00 (630)	16.00 (630)	2.0	12D3
PART NO.	A (MILS)	B (MILS)	ØF	HOLDER

13-034G-37	15.60 (614)	17.80 (701)	2.0	12D3
13-034G-36	8.30 (327)	9.70 (382)	1.0	12C
13-034G-35	11.00 (433)	13.00 (512)	2.0	12D3
13-034G-34	5.80 (228)	7.80 (307)	1.0	12C
13-034G-33	12.70 (500)	12.70 (500)	2.0	12D3
13-034G-32	7.50 (295)	9.00 (354)	1.0	12C
13-034G-31	5.00 (197)	7.50 (296)	1.0	12C
13-034G-30	12.00 (472)	13.00 (512)	2.0	12D3
13-034G-29	4.00 (158)	8.00 (315)	1.0	12C
13-034G-28	10.00 (394)	12.00 (472)	1.0	12C
13-034G-27	10.00 (394)	13.00 (512)	2.0	12D3
13-034G-26	REFER TO 13-034J-15			
13-034G-25	9.00 (354)	12.00 (472)	2.0	12D3
13-034G-24	7.42 (292)	11.68 (460)	1.0	12C
13-034G-23	11.20 (441)	13.61(536)	2.0	12D3
13-034G-22	7.10 (280)	8.89 (350)	1.0	12C
13-034G-21	4.80 (189)	6.00 (236)	1.0	12C
13-034G-20	11.00 (433)	11.00 (433)	1.0	12C
13-034G-19	9.00 (354)	9.00 (354)	1.0	12C
13-034G-18	6.00 (236)	7.00 (276)	1.0	12C
13-034G-17	6.00 (236)	6.00 (236)	1.0	12C
13-034G-16	4.00 (158)	7.00 (276)	1.0	12C
13-034G-15	15.00 (591)	15.00 (591)	2.0	12D3
13-034G-14	13.00 (512)	13.00 (512)	2.0	12D3
13-034G-13	5.00 (197)	5.00 (197)	1.0	12C
13-034G-12	7.50 (295)	12.00 (472)	1.0	12C
13-034G-11	7.00 (276)	7.00 (276)	1.0	12C
13-034G-10	6.00 (236)	9.00 (354)	1.0	12C
13-034G-09	12.00 (472)	12.00 (472)	1.0	12C
13-034G-08	7.00 (276)	8.50 (335)	1.0	12C
13-034G-07	8.00 (315)	10.00 (394)	1.0	12C
13-034G-06	4.00 (158)	9.00 (354)	1.0	12C
13-034G-05	9.14 (359)	9.14 (359)	1.0	12C
13-034G-04	5.50 (217)	7.50 (296)	1.0	12C
13-034G-03	6.00 (236)	8.10 (319)	1.0	12C
13-034G-02	5.80 (228)	7.05 (278)	1.0	12C
13-034G-01	11.00 (433)	11.20 (441)	1.0	12C
PART NO.	A (MILS)	B (MILS)	ØF	HOLDER


D

**SALES COPY
UNCONTROLLED DOCUMENT**

Copying of this document and giving it to others and the use of communication of the contents thereof are forbidden without express authority. Offenders are liable to the payment of damages. All rights are reserved in the event of the grant of a patent or the registration of a utility model or design.

TOLERANCE UNLESS SPECIFIED
X.X ±0.10 GENERAL TOL. ±0.2
X.XX ±0.05 ANGLE ±0.5°
SURFACE FINISH 1.6/
REMOVE BURRS AND SHARP EDGES
ALL DIMENSIONS IN MM.
13-99-027 R03

MATERIAL: NBR



MICRO-MECHANICS PTE LTD
 mmsingapore@micro-mechanics.com
 TEL: 67468800 FAX: 67467700

PROCESS:	-
DATE:	19-2-09
DRAFTSMAN:	MT HAN
CHECKER:	HS TOK

TITLE:	RUBBER TIP
SCALE:	10:1
DRAWING NO:	13-034G-XX

REV.	
22	
SHEET	1
	1

1 2 3 4 5 6